



# BANK REPOSSESSION & DISTRESSED SALE PROPERTIES

Spanish property direct from the bank

Secure titles & Bank Guarantees. Exclusive properties, key-ready developments.



## DE ADOSADOS, JALON VALLEY

h  
O " † K † V # " .



WITH  
**90%**  
MORTGAGE

**GRAN DESCUENTOS**  
**SELECCIÓN EXCLUSIVA**  
Catálogo reposiciones



# BANK REPOSSESSION & DISTRESSED SALE PROPERTIES

## Spanish property direct from the bank

Secure titles & Bank Guarantees. Exclusive properties, key-ready developments.



### 1.- AREA

#### 1. General Location

- 1.1 Distance from Airports
- 1.2 Access / Communications
- 1.3 Leisure

### 2.- COMPLEX

- 2.1 The Development
- 2.2 Description of the complex
- 2.3 The Property
- 2.4 Photos - Interior
- 2.5 Photos- Exterior
- 2.6 Floor Plan - 2 Bedroom
- 2.7 Floor Plan - 3 Bedroom





# BANK REPOSSESSION & DISTRESSED SALE PROPERTIES

## Spanish property direct from the bank

Secure titles & Bank Guarantees. Exclusive properties, key-ready developments.



### 1.- AREA

#### 1. General Location

The urbanisation is located in the Valley of Jalon, on the north of the Costa Blanca. In the last few years this area has been highly sought after by foreign buyers, with the purpose to enjoy the traditional way of Spanish life but at a more reasonable price compared to those on the coastal areas..

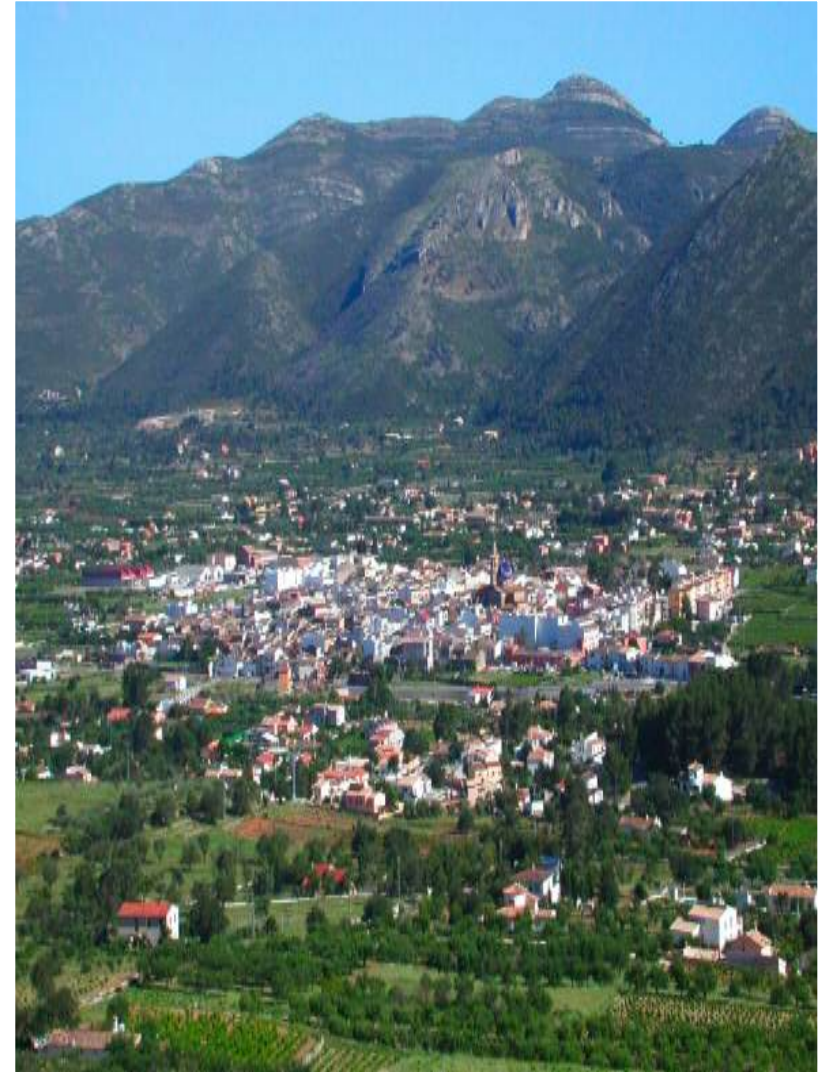
The locality has a population of 3,189 inhabitants and benefits from all the comforts of daily life: stores, bars, restaurants, supermarkets etc, and an English school which attracts many students.

#### 1.1 Distance to Airports

El Altet (Alicante):	69.4 km
Manises (Valencia):	92.5 km

#### 1.2 Access / Communications:

National route N-332	8.6 km
Motorway AP-7	12.8 km
Trenet	12.5 km





# BANK REPOSSESSION & DISTRESSED SALE PROPERTIES

## Spanish property direct from the bank

Secure titles & Bank Guarantees. Exclusive properties, key-ready developments.



### 1.3 Leisure

#### Golf

At present there are 10 golf courses within the province of Alicante. There are 2 golf courses only 10 minutes in car from the properties, Sella Club Golf; (8.8 km) and Club of Ifach Golf (7.2 km).

#### Beaches

The complex is near 4 coastal towns: Denia, Jávea, Moraira and Calpe all with diverse beaches and coves: " Beach Marina" (13 km) in Dénia, " It pierces Granadella" (18 km) in Jávea, Beach of the East or the Fossa " (20 km) in Calpe and " Beach of L' Ampolla" (21 km) in Moraira.

#### Sports Clubs

There are two Sport Clubs within the vicinity. The nearest is the "Club Nautical Moraira" , located to only 10.6 km and the other located in the 'Club Nautical' of Calpe, 13 km away..





# BANK REPOSSESSION & DISTRESSED SALE PROPERTIES

## Spanish property direct from the bank

Secure titles & Bank Guarantees. Exclusive properties, key-ready developments.



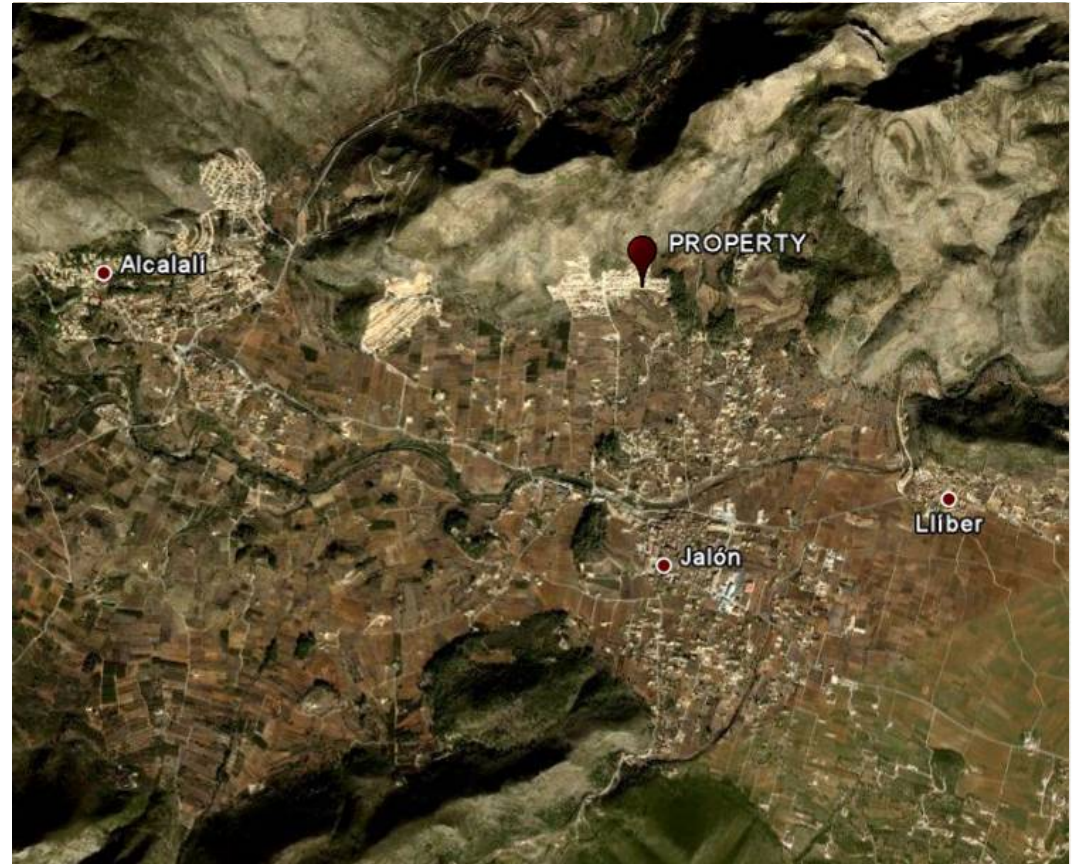
## 2.- THE COMPLEX

### 2.1 The Urbanisation

Los adosados is located within a development plan to the north of the Valley of Jalon, approximately to 2 kms of the city of Jalon.

The development plan incorporates use of mixed types of villas. The development faces a Southerly direction and benefits from panoramic views towards the vineyards.

Kitchens are totally equipped with all electric home appliances (Oven, hob, Extractor hood, dishwasher, washing machine and refrigerator), pre-installed air conditioning, Double glazing and Security door





# BANK REPOSSESSION & DISTRESSED SALE PROPERTIES

## Spanish property direct from the bank

Secure titles & Bank Guarantees. Exclusive properties, key-ready developments.



## 2.- THE COMPLEX

### 2.2 Description of the Complex

The villas are located within a complex of 15 houses and are constructed in two levels in the Mediterranean style. All have ample terraces to take the sun and in some cases, a roof solarium.

There are two models of properties on offer and come with community: gardens, parking places swimming pool etc.





# BANK REPOSSESSION & DISTRESSED SALE PROPERTIES

## Spanish property direct from the bank

Secure titles & Bank Guarantees. Exclusive properties, key-ready developments.



## 2.- THE COMPLEX

### 2.3 Los adosados



#### Property Characteristics:

- Double Bedrooms
- Electric Blinds
- Security entrance doors
- Ensuites
- Pre-installed air conditioning
- Fully equipped kitchens
- Kitchen electrical appliances
- Fireplace

Pre-installed pipework for central heating by radiators

We have 70 available units on the complex. You have a choice of 2 or 3 bedroom houses of 101m<sup>2</sup> to 128m<sup>2</sup> construction and gardens from 16m<sup>2</sup> to 39m<sup>2</sup>





# BANK REPOSSESSION & DISTRESSED SALE PROPERTIES

Spanish property direct from the bank

Secure titles & Bank Guarantees. Exclusive properties, key-ready developments.



2.- THE COMPLEX

2.4 Photos - Interior





# BANK REPOSSESSION & DISTRESSED SALE PROPERTIES

Spanish property direct from the bank

Secure titles & Bank Guarantees. Exclusive properties, key-ready developments.



2.- THE COMPLEX



2.5 Exterior Photos





# BANK REPOSSESSION & DISTRESSED SALE PROPERTIES

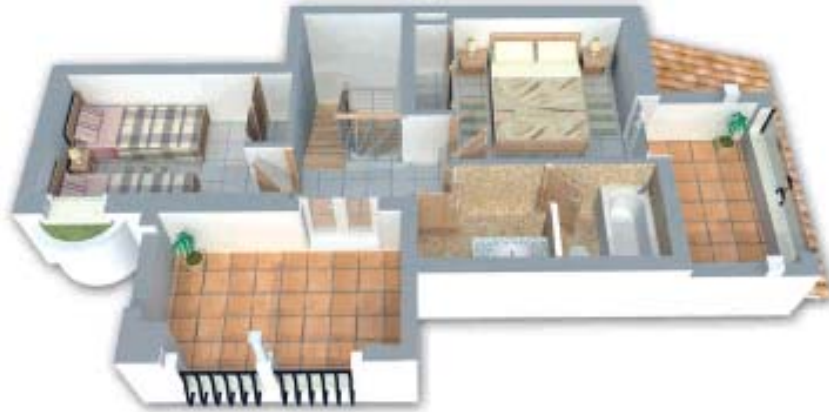
## Spanish property direct from the bank

Secure titles & Bank Guarantees. Exclusive properties, key-ready developments.



### 2.- THE COMPLEX

### 2.6 Floor Plans (2 Bed)





# BANK REPOSSESSION & DISTRESSED SALE PROPERTIES

## Spanish property direct from the bank

Secure titles & Bank Guarantees. Exclusive properties, key-ready developments.



2.- THE COMPLEX  
2.7 Floor Plans (3 Bed)





# BANK REPOSSESSION & DISTRESSED SALE PROPERTIES

## Spanish property direct from the bank

Secure titles & Bank Guarantees. Exclusive properties, key-ready developments.



Los Adosados Villas. Lista de precios

Descuento

Distribución		
Casa	Modelo	
1	5	B
3	4	B
5	3	A
6	4	A
7	7	A
8	5	A
9	2	
10	6	
11	6	
12	1	
13	2	
14	6	
15	1	

Habitaciones	m2 construidos	Coef.	m2 jardín	Precio de Venta € IVA no incluido		
3	128,31	7,26	27,25	190.000,00		
3	110,31	6,24	27,10	180.000,00		
2	112,80	6,38	21,55	170.000,00		
3	110,31	6,24	16,85	160.000,00		
3	127,18	7,20	16,85	185.000,00		
3	128,31	7,26	22,80	180.000,00		
2	113,02	6,39	21,80	170.000,00		
3	127,25	7,20	16,85	180.000,00		
3	127,25	7,20	16,85	180.000,00		
2	101,25	5,73	22,80	148.000,00		
2	113,02	6,39	39,05	177.000,00		
3	127,25	7,20	29,35	190.000,00		
2	101,25	5,73	34,85	177.000,00		
1.527,51				86,42	313,95	2.287.000,00



A todos los importes hay que añadirles el 7% de IVA

T= Terraza